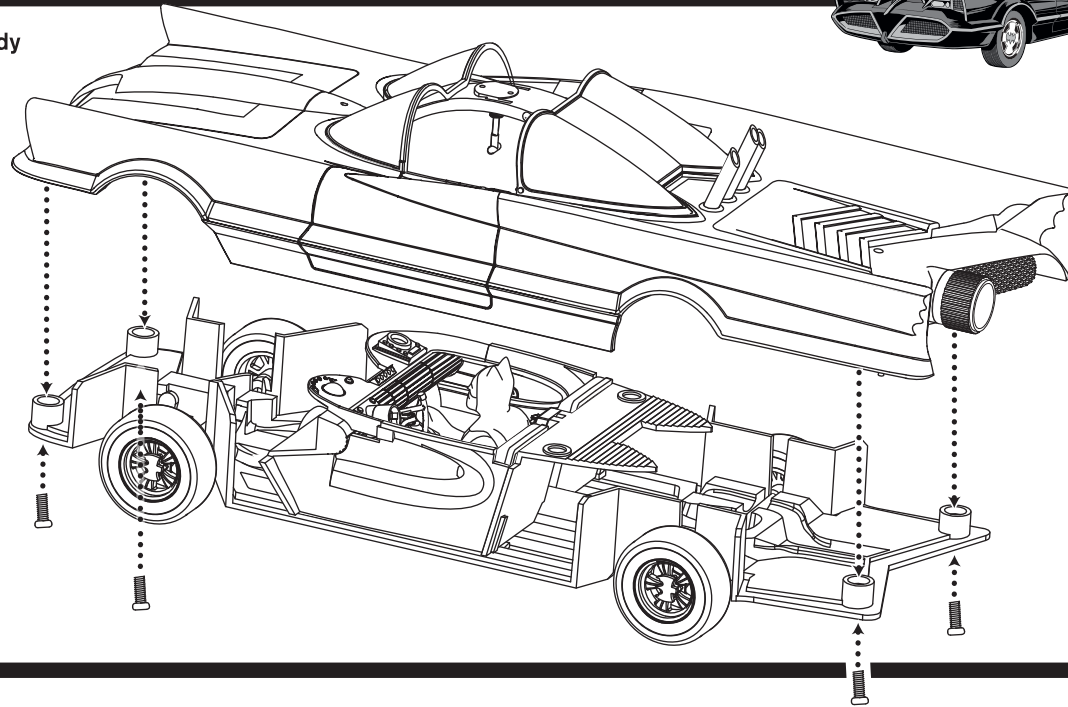


MAIN ASSEMBLY

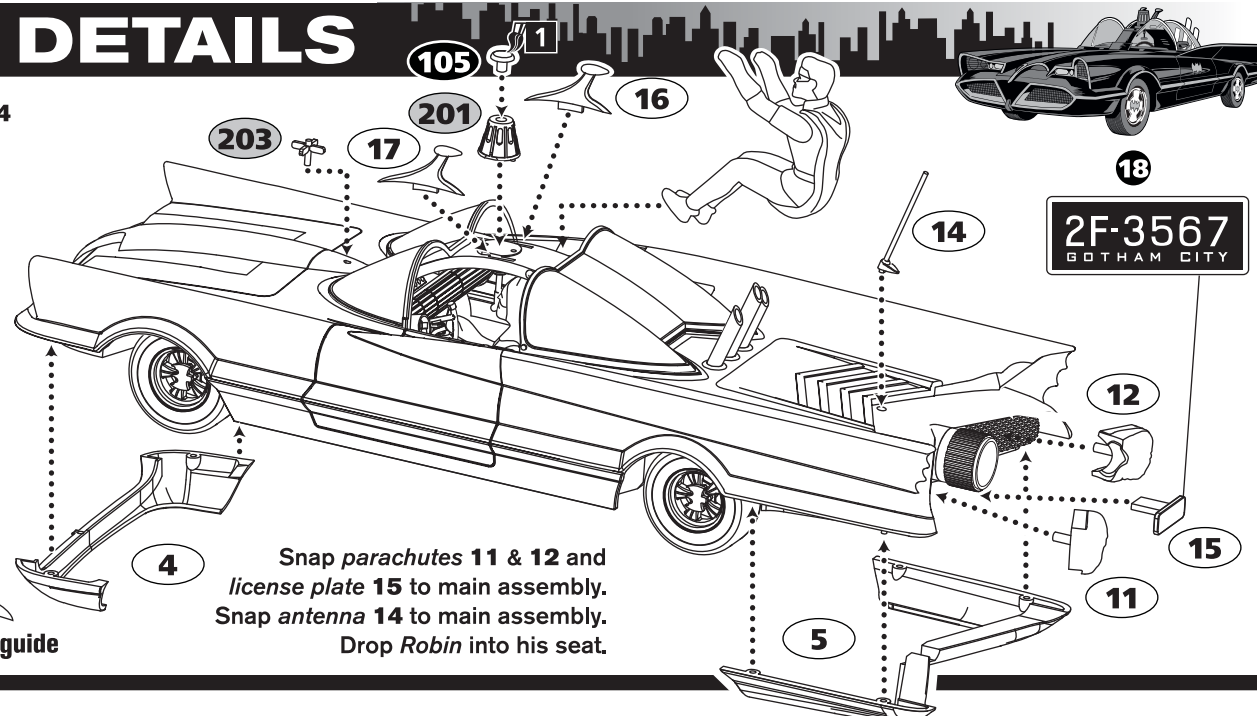
Attach chassis assembly to body assembly using metal screws.



FINAL DETAILS

Snap front roll pan 4 and rear roll pan 5 to main assembly. Insert beacon lens 105 into beacon 201. Snap beacon assembly, and antlers 16 & 17 to main assembly.

Parts 16 & 17 paint guide



POLAR LIGHTS

POL965/12

BATMOBILE™

1:25 SCALE • SNAP-ASSEMBLY MODEL KIT • AGES 10 +



This kit can be assembled by snapping together the parts as indicated by the instructions. However, if you wish to glue the pieces in a conventional manner, and detail the kit with paints, that is also an easy task.

GENERAL ASSEMBLY

- Before assembling model, study diagram carefully.
- For best results, assemble model exactly in the order indicated.
- Take time to familiarize yourself with all the parts and their corresponding part numbers.
- Carefully cut the parts from the plastic tree supports and remove any burrs.

OPTIONAL GLUING TIPS

- This kit is molded of styrene plastic – use only styrene compatible glues or cements.
- Before proceeding to cement parts together, it is advisable to fit parts together dry (without cement) so that you may familiarize yourself with the parts and how they go together, also noting the points where cement is to be applied.
- Apply cement to inside surfaces only and avoid getting cement on outer surfaces of model sections.
- Use cement sparingly, being careful to avoid getting cement on hands, so as not to mar or smear plastic surfaces.
- Do not hurry. Work carefully and patiently.

DECAL APPLICATION

- Decal application is optional for the modeler.
- Young modelers may need assistance from an adult.
- Some supplied decals represent decoration present on the car after its appearance in season 1 of the 1966 television show. They are supplied as options for the modeler.
- Duplicates are supplied in case an error occurs during application.
- To apply decals, carefully cut them from the sheet and let each soak individually in lukewarm water for up to one minute. Once removed from the water, let the decal sit for an additional minute. Carefully slide the decal from the backing paper onto the model surface.
- Apply decals to parts before beginning assembly.

PAINTING GUIDE

Paint is not required to complete this model but it is an option for the builder. For best results when painting, use only high quality paints designed specifically for use on plastic model kits. For the benefit of young modelers, Model Master acrylic paints are suggested.

1	CLEAR RED.....	4630
2	AIRCRAFT INTERIOR BLACK.....	4767
3	TURN SIGNAL AMBER.....	4624
4	CHEVY ENGINE RED.....	4629
5	SILVER.....	4678

Paints listed here are suggestions to match colors already applied to the model. Modelers may choose to research the colors further to find colors that satisfy their own judgement.

Note: When paint symbols are placed next to a part number, this indicates the entire parts should be painted. When the symbol is placed on a part, this indicates that only specific areas should be painted.

Like what you found here, and looking for another challenge? Look for more exciting **BATMAN** model kits from **Polar Lights & AMT!**



Special thanks to Eric Seltzer for assistance in developing this kit. Visit 1966batmobile.com
Buildup by mike Wherry.

round2models.com collectormodel.com

Round 2 Round 2, LLC
4073 Meghan Beeler Ct.
South Bend, IN 46628

CE International Hobbycraft (UK) Ltd
10 Temple Back
Bristol BS1 6FL England

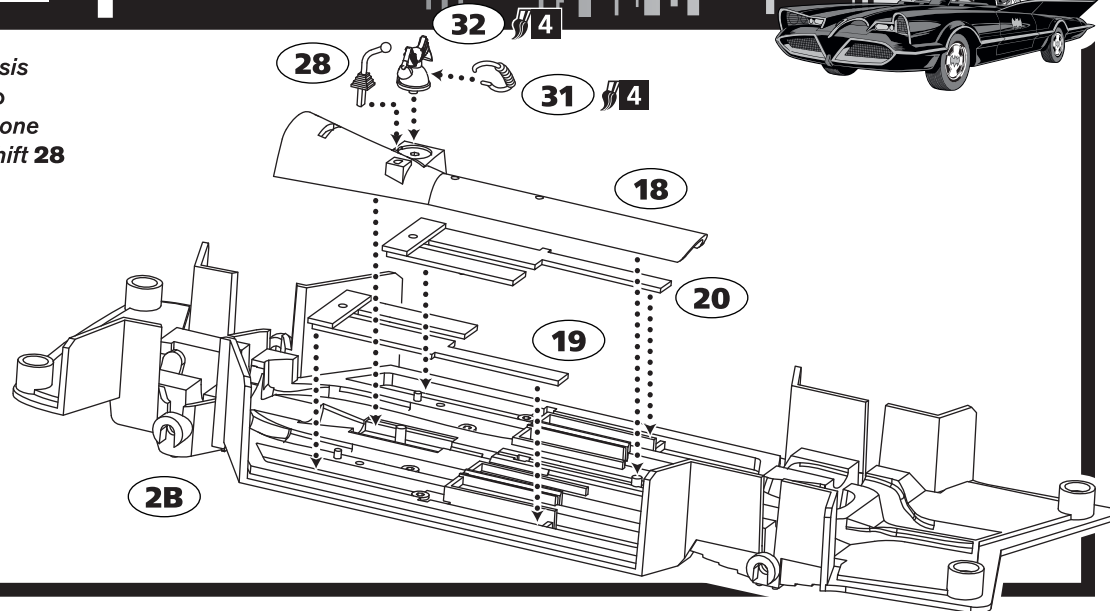
Batmobile designed by George Barris.
BATMAN and all related characters and elements © & ™ DC Comics and Warner Bros. Entertainment Inc. (s19)
POLAR LIGHTS and AMT and ROUND 2 and design are trademarks of Round 2, LLC. ©2019 Round 2, LLC, South Bend, IN 46628 USA. Product and packaging designed in the USA. Made in China. All rights reserved.



INTERIOR – 1

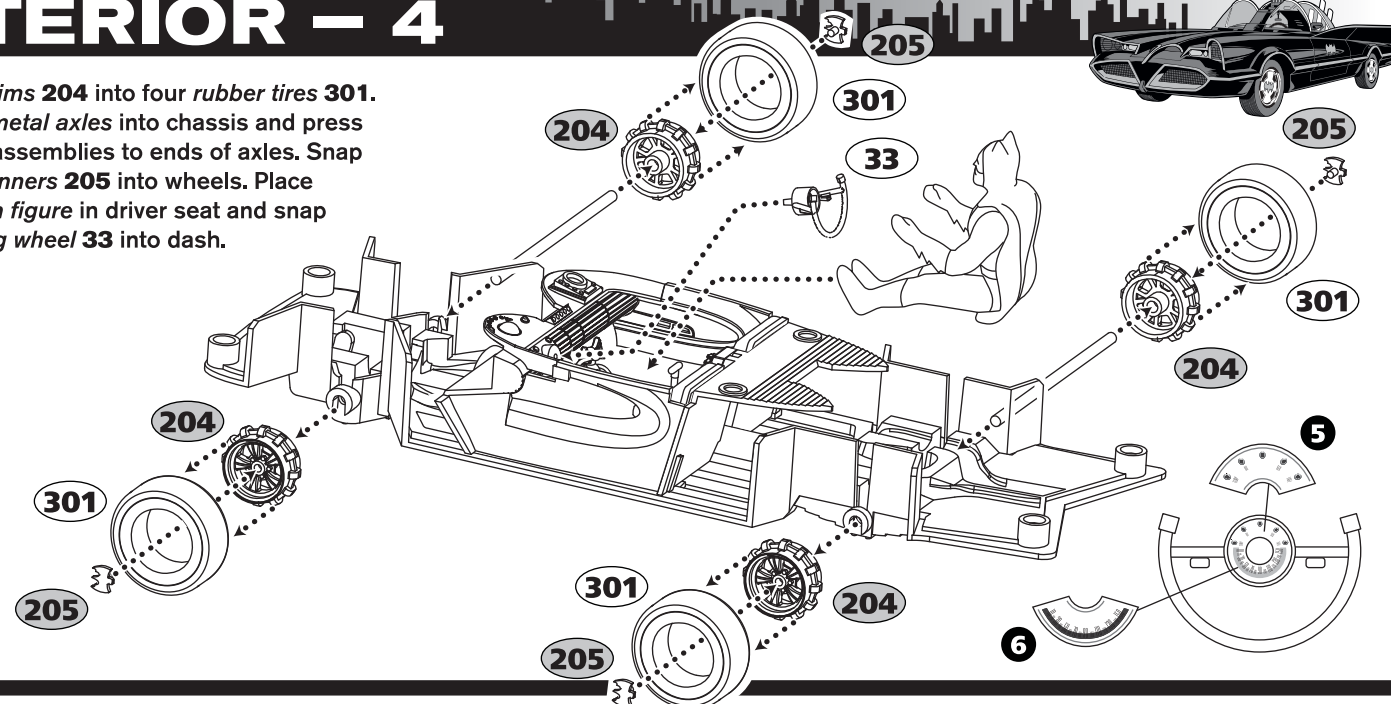
Snap floorboards 19 & 20 onto chassis 2B. Snap transmission tunnel 18 into chassis. Snap phone cord 31 into phone 32. Snap phone assembly and gear shift 28 into chassis assembly.

- KEY TO SYMBOLS**
- 1 Opaque Plastic Part
 - 101 Clear Plastic Part
 - 201 Chrome Plastic Part
 - 1 Decal Number
 - 1/1 Paint Code



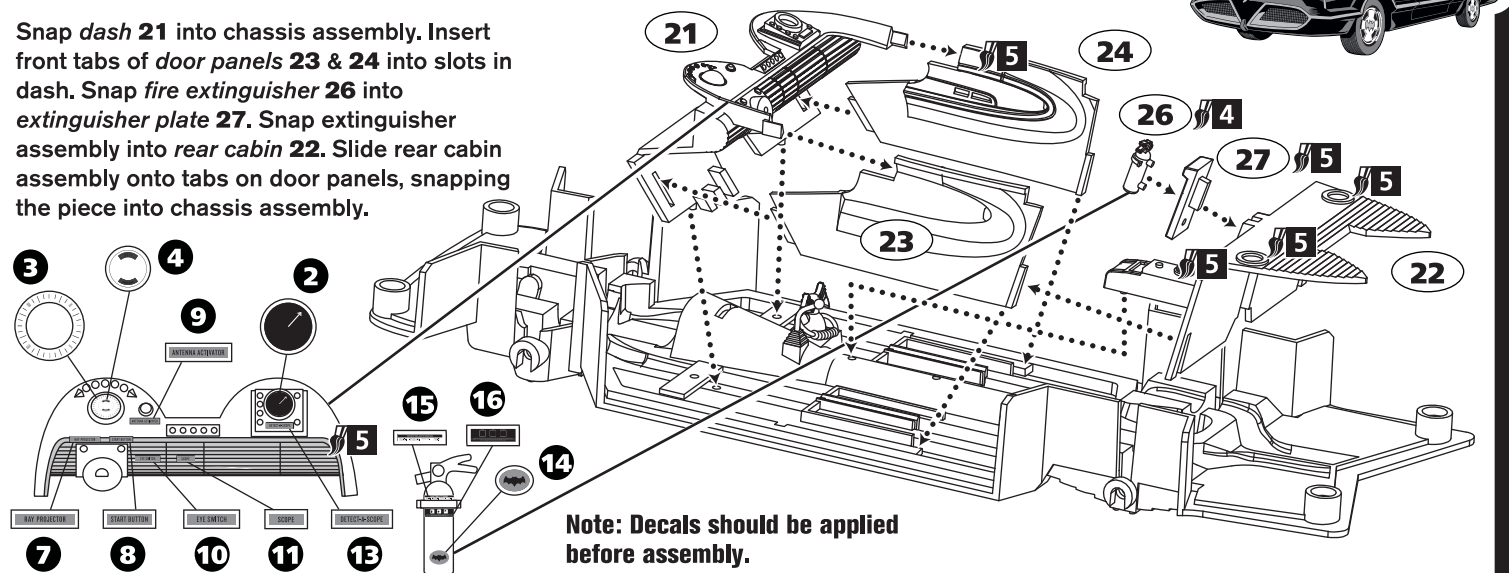
INTERIOR – 4

Insert rims 204 into four rubber tires 301. Insert metal axles into chassis and press wheel assemblies to ends of axles. Snap Bat-spinners 205 into wheels. Place Batman figure in driver seat and snap steering wheel 33 into dash.



INTERIOR – 2

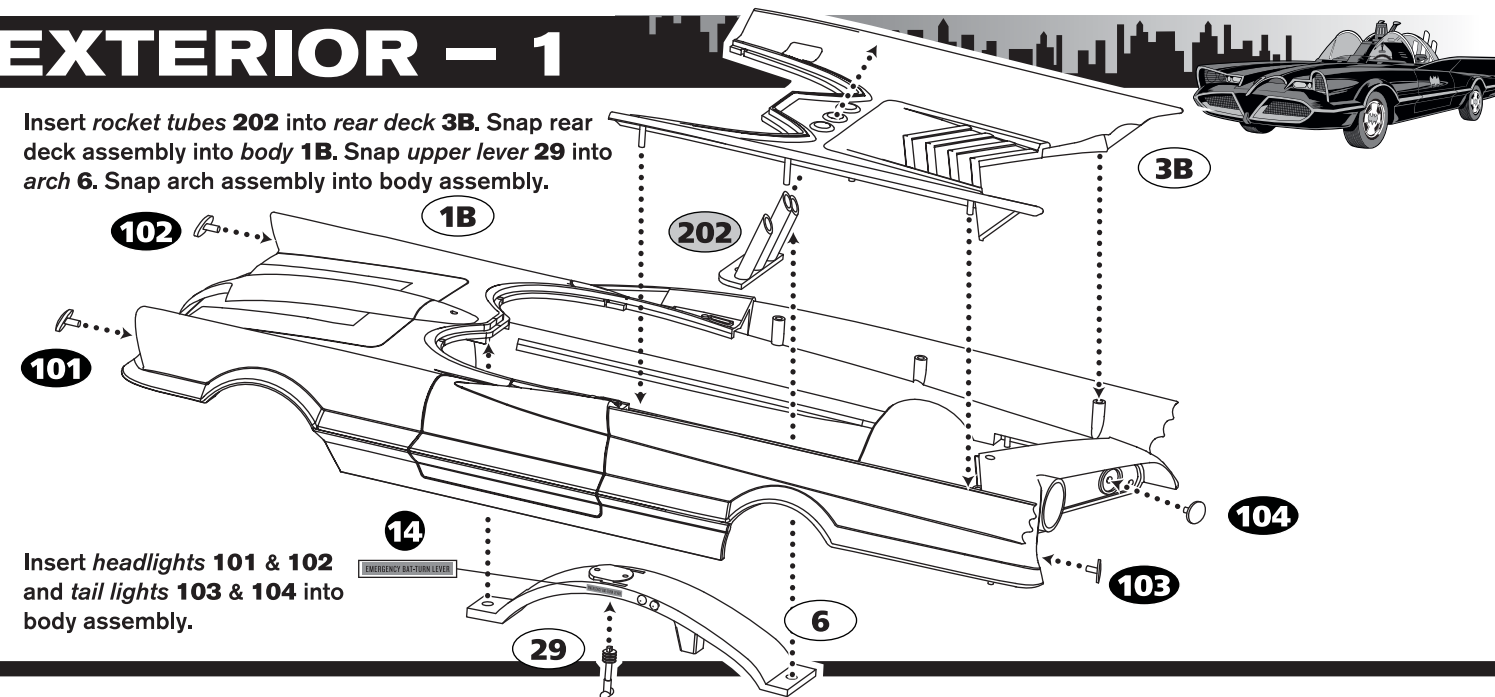
Snap dash 21 into chassis assembly. Insert front tabs of door panels 23 & 24 into slots in dash. Snap fire extinguisher 26 into extinguisher plate 27. Snap extinguisher assembly into rear cabin 22. Slide rear cabin assembly onto tabs on door panels, snapping the piece into chassis assembly.



Note: Decals should be applied before assembly.

EXTERIOR – 1

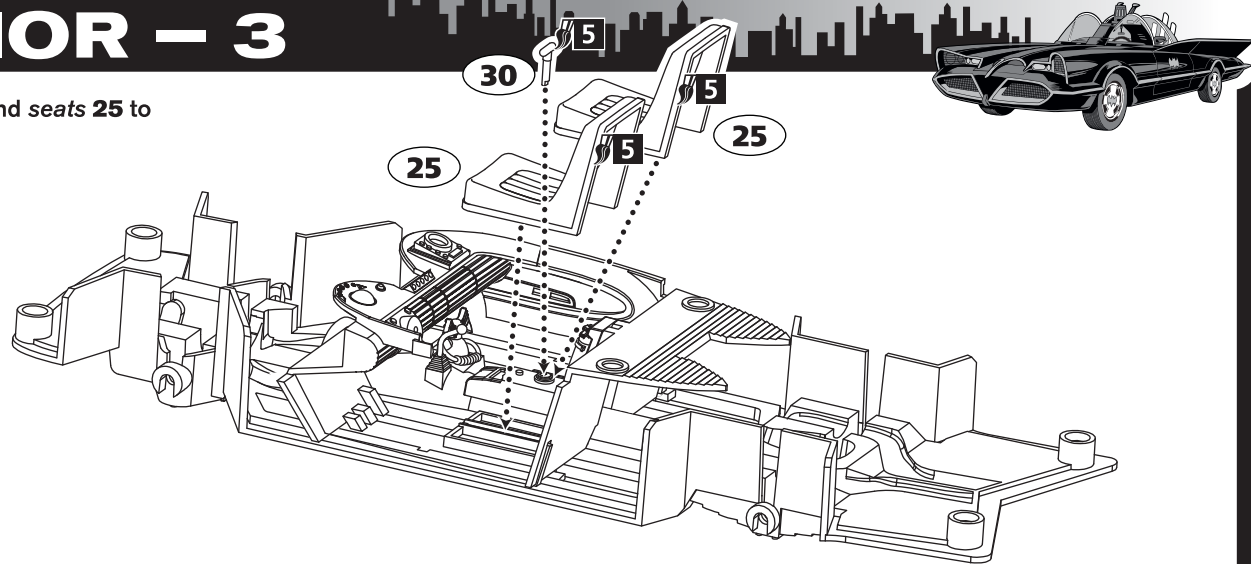
Insert rocket tubes 202 into rear deck 3B. Snap rear deck assembly into body 1B. Snap upper lever 29 into arch 6. Snap arch assembly into body assembly.



Insert headlights 101 & 102 and tail lights 103 & 104 into body assembly.

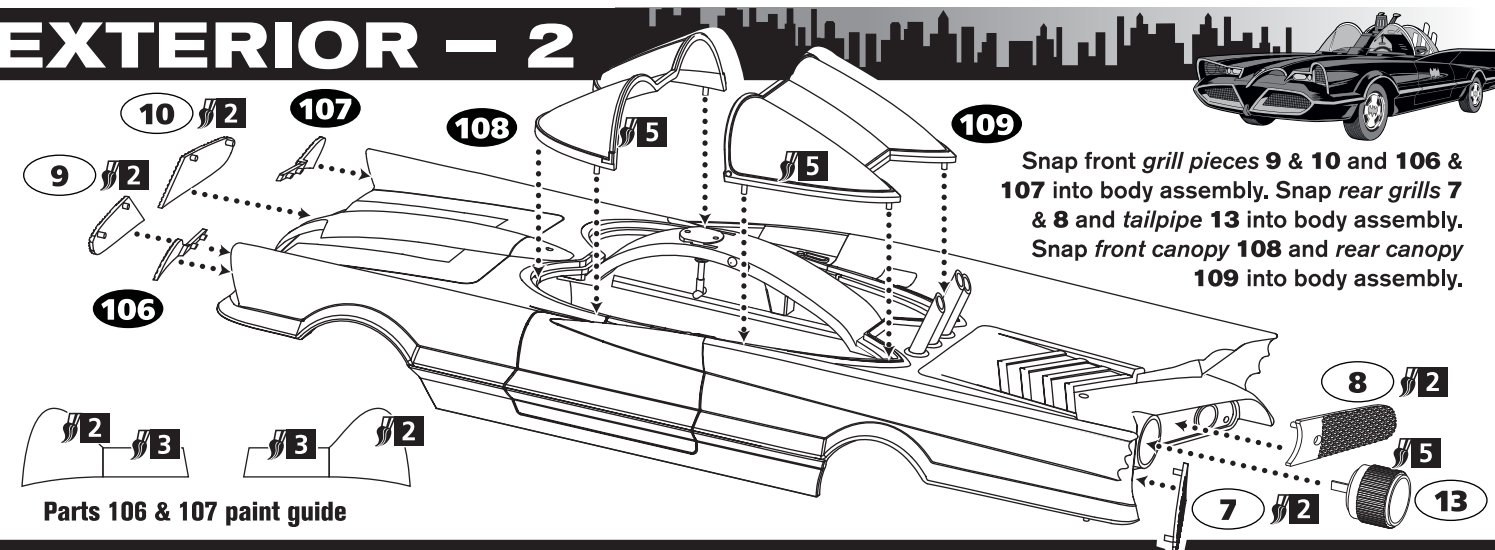
INTERIOR – 3

Snap lower lever 30 and seats 25 to interior assembly.



EXTERIOR – 2

Snap front grill pieces 9 & 10 and 106 & 107 into body assembly. Snap rear grills 7 & 8 and tailpipe 13 into body assembly. Snap front canopy 108 and rear canopy 109 into body assembly.



Parts 106 & 107 paint guide